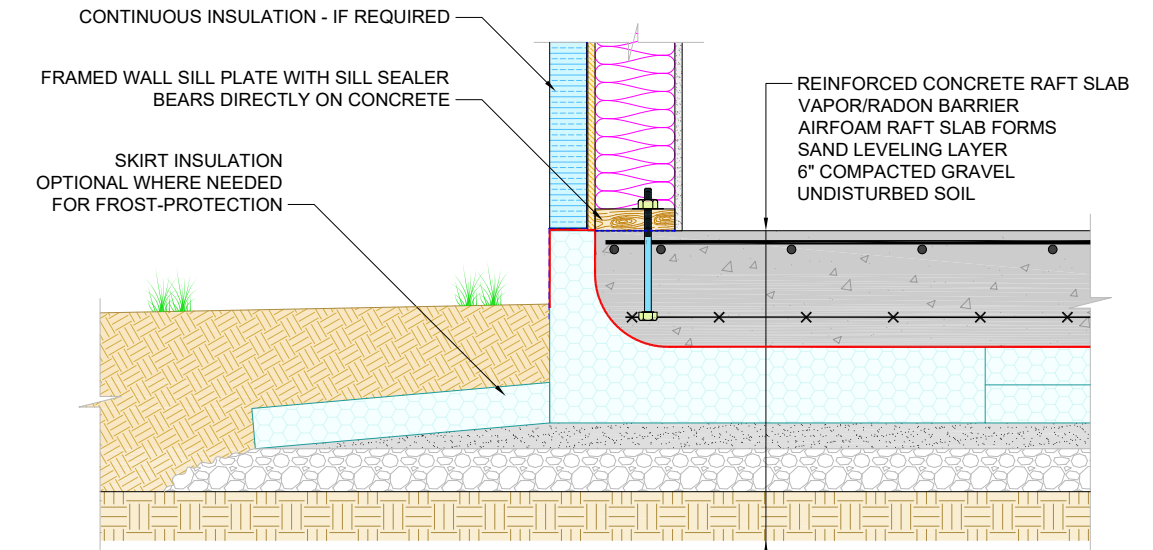


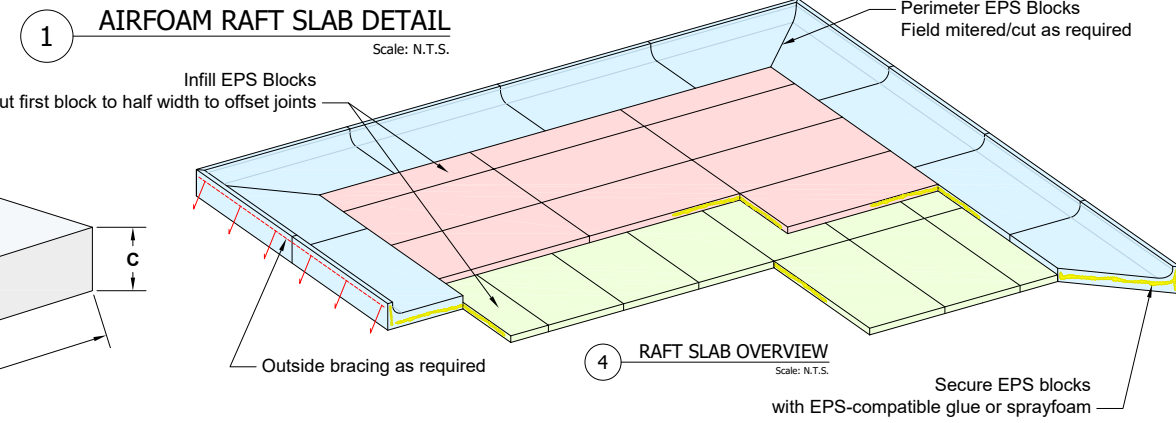
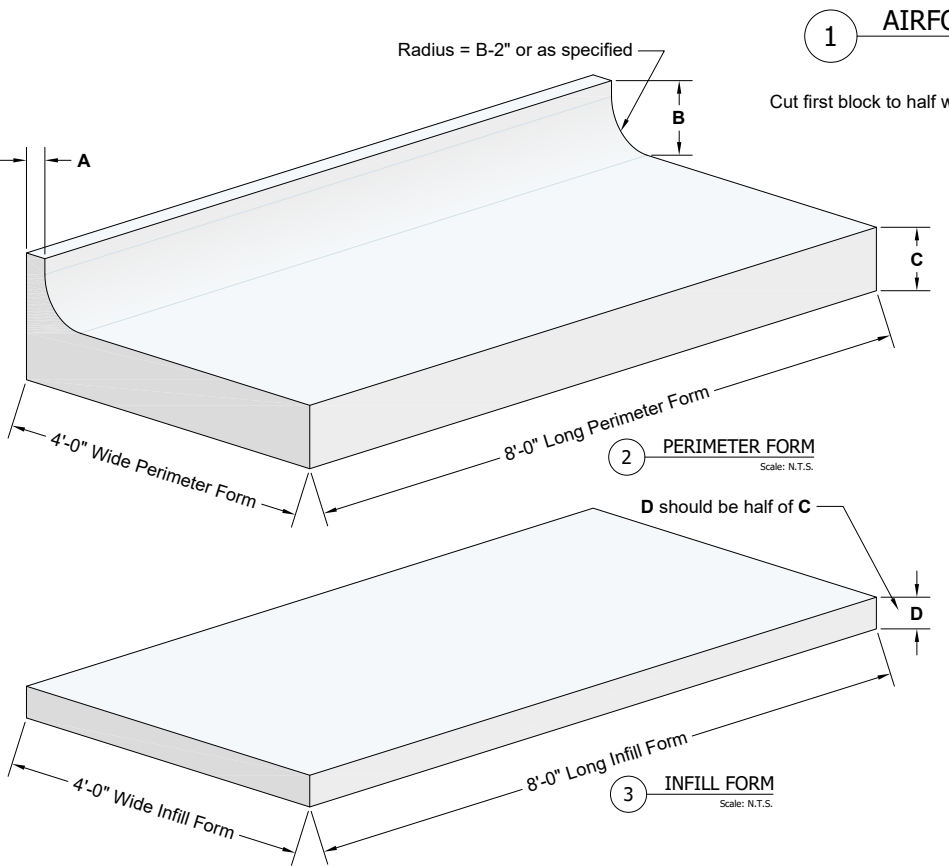
Structural Raft Slab
Reinforced concrete raft slabs are structural elements and as such must be designed and stamped by the project's engineer of record. They disperse exterior/interior wall line loads, point loads and any other stresses across the entire slab, so the heavy rebar-mat is placed near the top of the slab.

Raft Slab EPS Blocks (Perimeter & Infill)
Airfoam Raft Slab EPS Blocks are custom wire cut to suit site specifications. See table on right for different types with their respective compressive strengths.

Skirt Insulation
The details (5) and (6) below depict a variation based on ASCE 32 and the Revised Builder's Guide to Frost Protected Shallow Foundations published by NAHB Research Center, Inc. This insulation serves to further protect the building from frost heave by raising soil temperature and the frost depth around the building.



5 RAFT SLAB WITH SKIRT INSULATION
Scale: N.T.S.



4 RAFT SLAB OVERVIEW
Scale: N.T.S.

AIRFOAM RAFT SLAB EPS BLOCKS - ORDER TABLE						
	A (in)	B (in)	C (in)	D (in)	Quantity	Type (see table on right)
Perimeter Blocks				Not Applicable.		
Infill Blocks	4'-0" Wide x 8'-0" Long					
Skirt Insulation 1	4'-0" Wide x 8'-0" Long					
Skirt Insulation 2	4'-0" Wide x 8'-0" Long					
Additional EPS	4'-0" Wide x 8'-0" Long					

6 RAFT SLAB WITH SKIRT INSULATION
Scale: N.T.S.

Skirt Insulation
Refer to ASCE 32 and Revised Builder's Guide to Frost Protected Shallow Foundations by NAHB Research Center, Inc.

Airfoam Industries Ltd.
19402 56 Ave, Surrey, BC V3S 6K4
Phone: +1.604.534.8626
Fax: +1.604.534.1212
www.airfoam.com

© Copyright 2023 Airfoam Industries Ltd.

THIS DESIGN AND DRAWINGS IS AND AT ALL TIMES REMAINS THE EXCLUSIVE PROPERTY OF AIRFOAM INDUSTRIES LTD. AND CANNOT BE USED WITHOUT THE DESIGNER'S WRITTEN CONSENT. DO NOT SCALE DRAWINGS. DIMENSIONS ALWAYS TAKE PRECEDENCE OVER SCALE DIMENSIONS. ALL DIMENSIONS MUST BE VERIFIED BY THE CONTRACTOR. AIRFOAM INDUSTRIES LTD. DOES NOT ASSUME LIABILITY. PLEASE ADVISE AIRFOAM INDUSTRIES LTD. IF ANY DISCREPANCIES ARE FOUND OR EXPLANATIONS ARE REQUIRED. ALL WORK MUST COMPLY WITH LOCAL BY-LAW AND CURRENT BUILDING CODE. ALL INSTALLATION DETAILS ARE CONTROLLED BY ICF INSTALLER & G.C.

No.	DATE	DESCRIPTION
01	2023-02-23	Revision 1

R E V I S I O N S

Airfoam Raft Slab

Drawing Specifications

DATE:	2020-02-25	DRAWN BY:	Z. PROSTRAN
SCALE:	AS SHOWN	APPROVED BY:	
SHEET SIZE:	11"x17"	APPROVED ON:	YYYY-MM-DD
PROJECT NO.:	K00	SHEET:	AR-RF-1